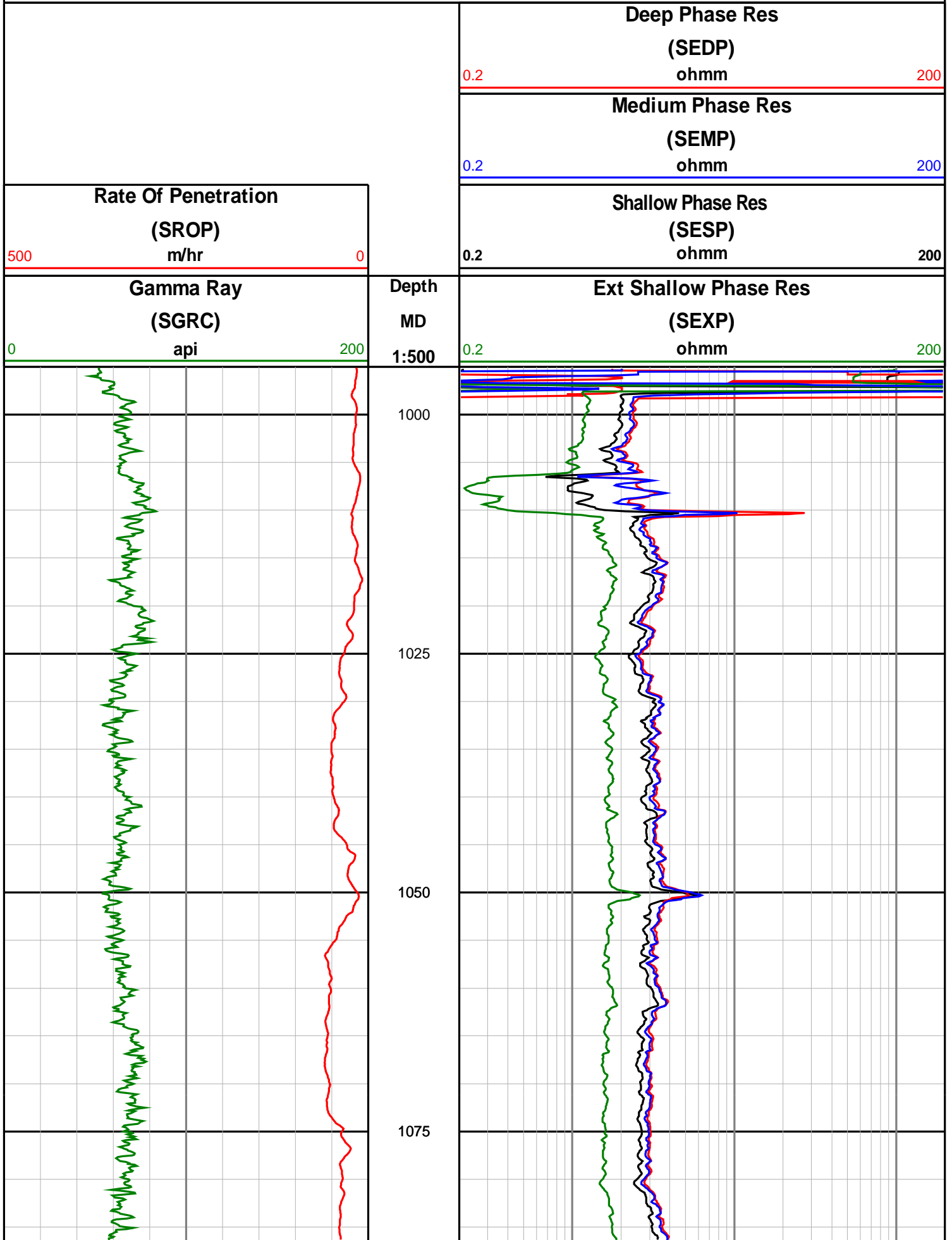


Anzon Australia Ltd

Basker-4

Realtime LWD Log (Permanent Datum - LAT)





1100

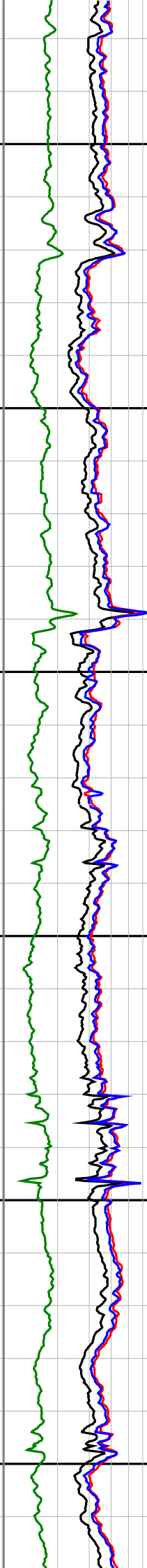
1125

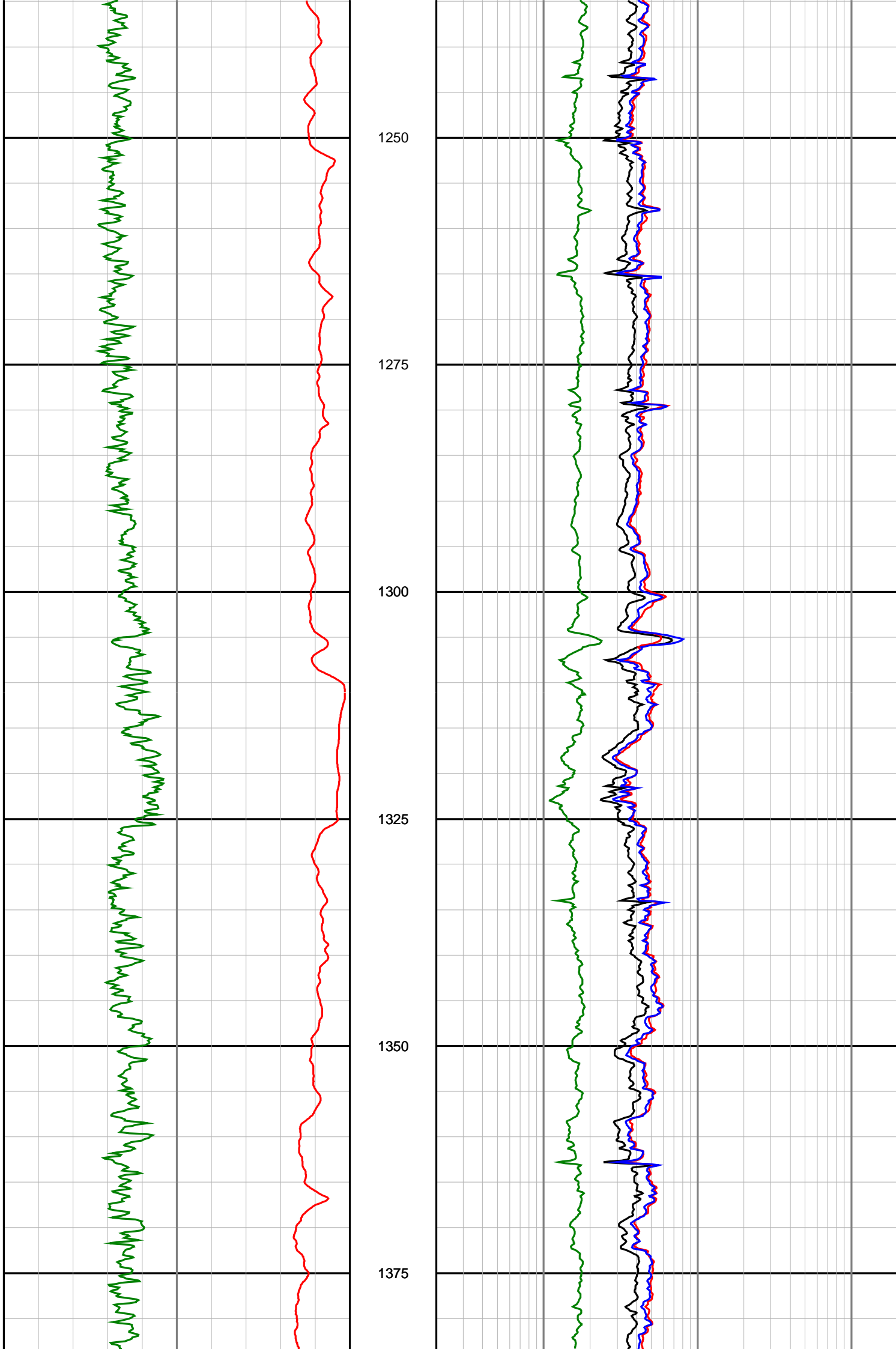
1150

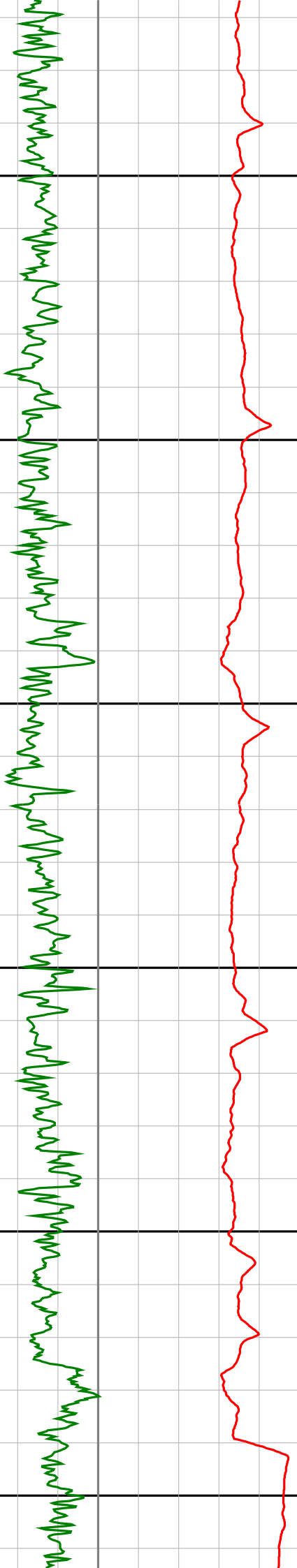
1175

1200

1225







1400

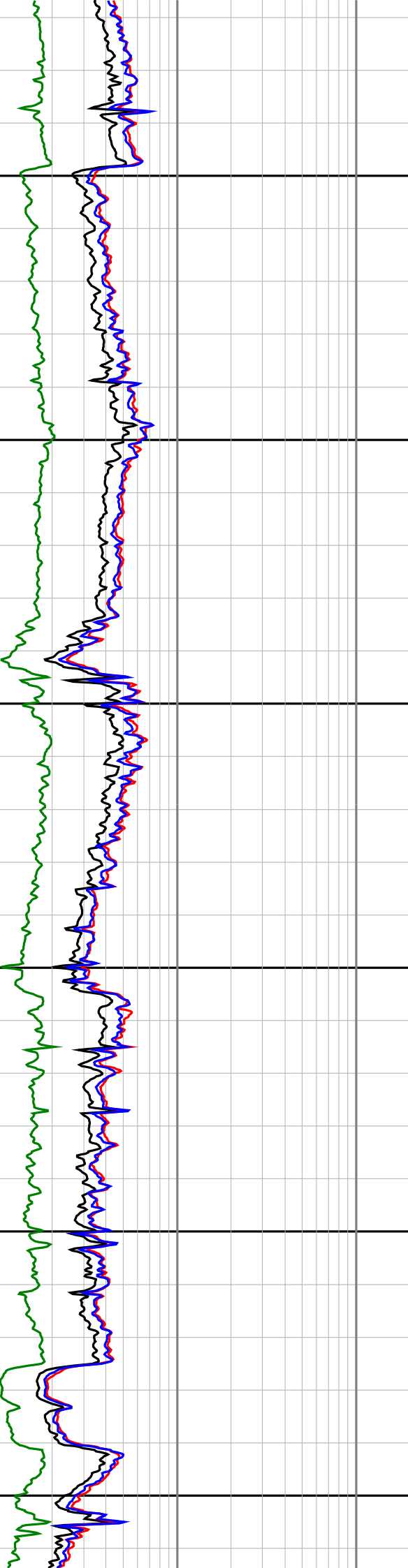
1425

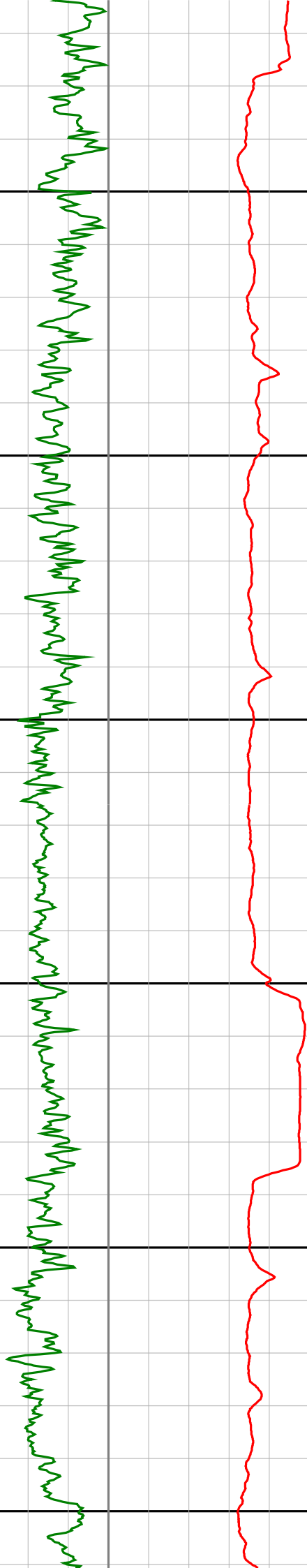
1450

1475

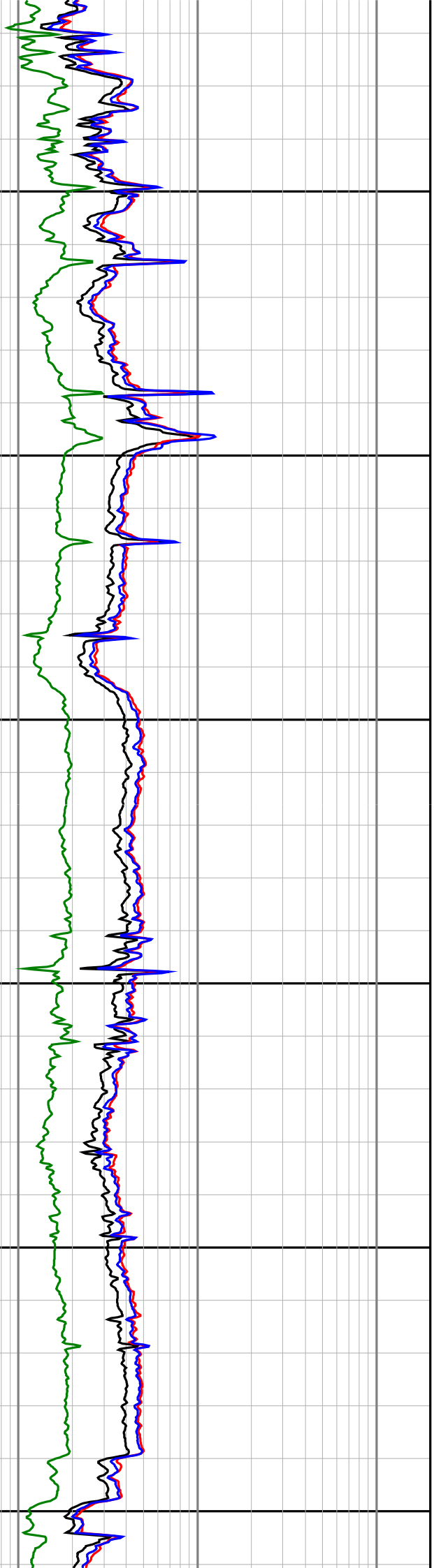
1500

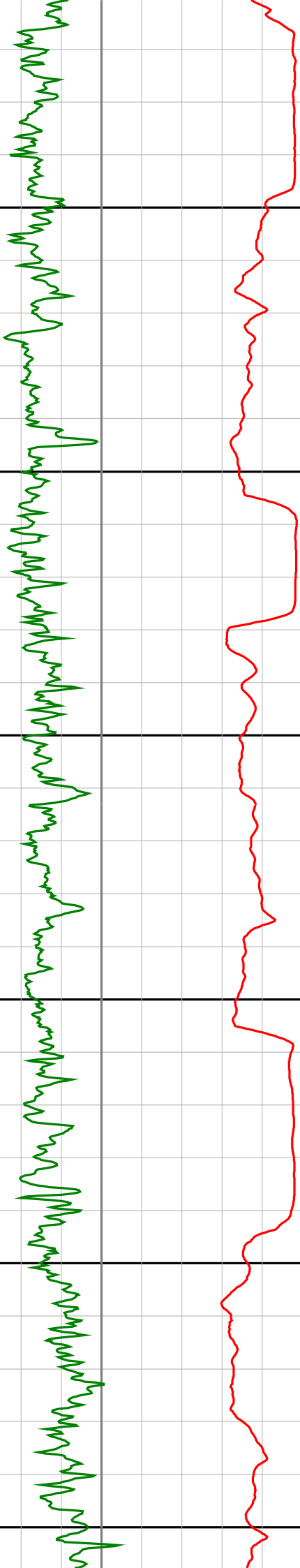
1525





1550
1575
1600
1625
1650
1675





1700

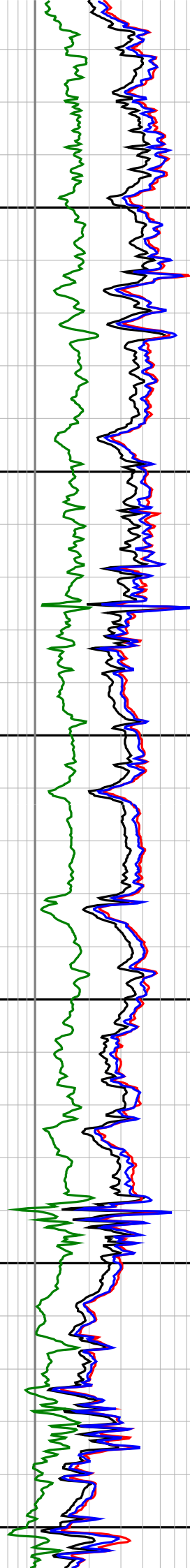
1725

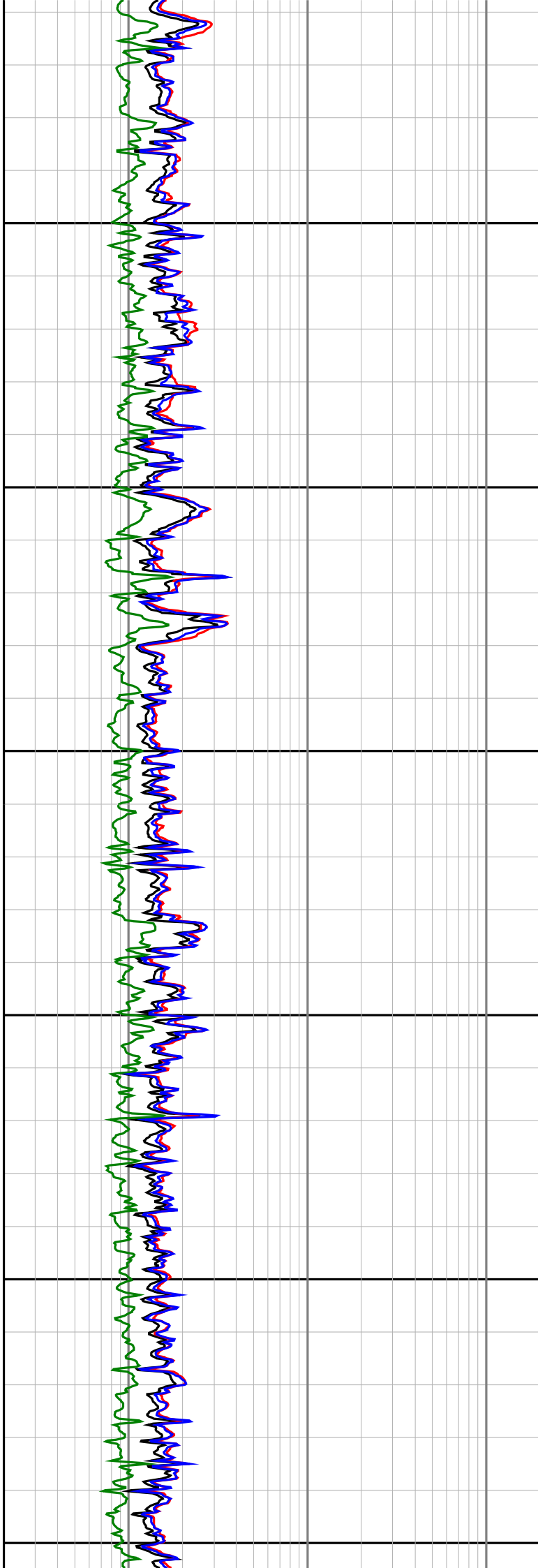
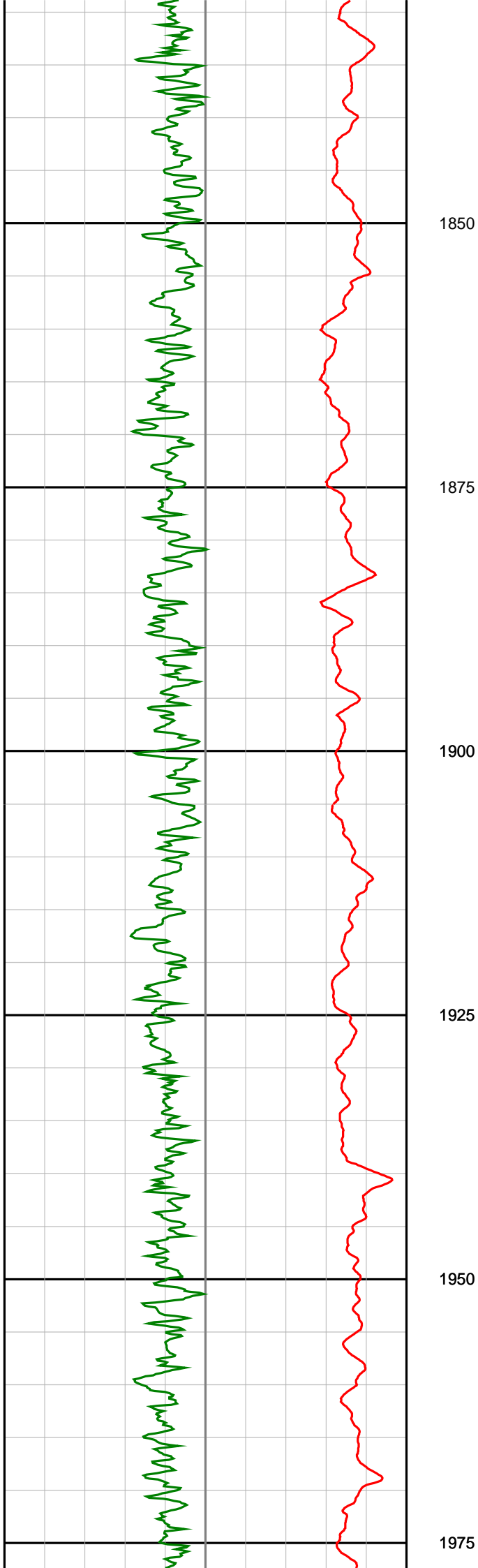
1750

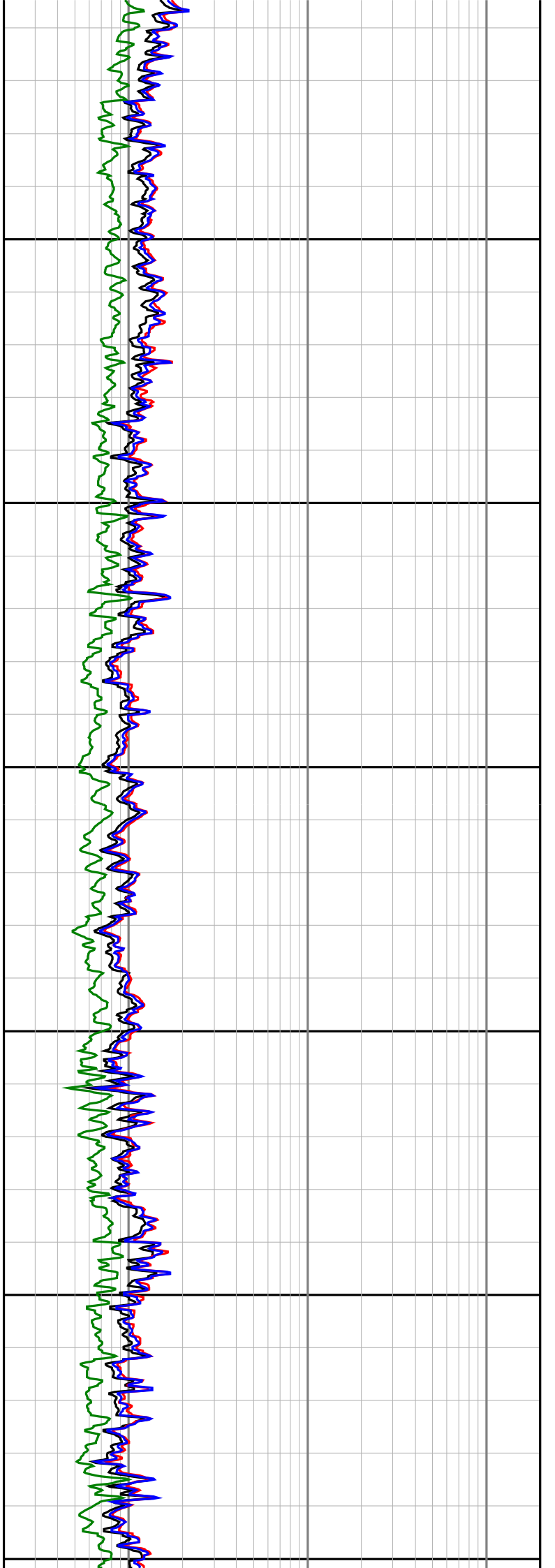
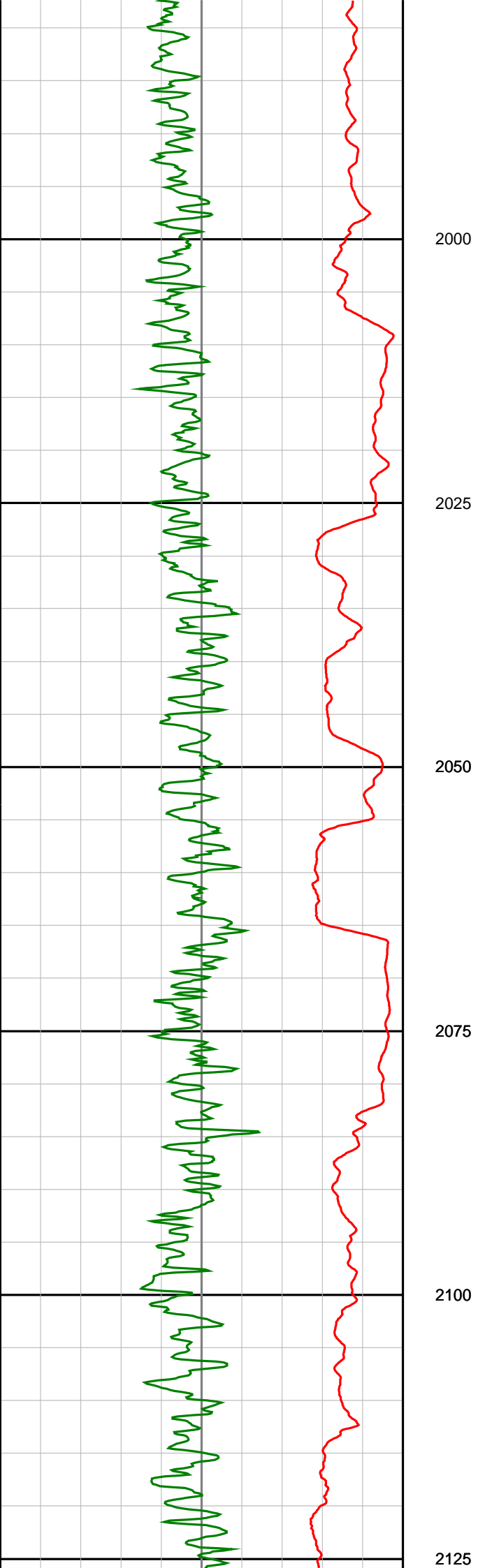
1775

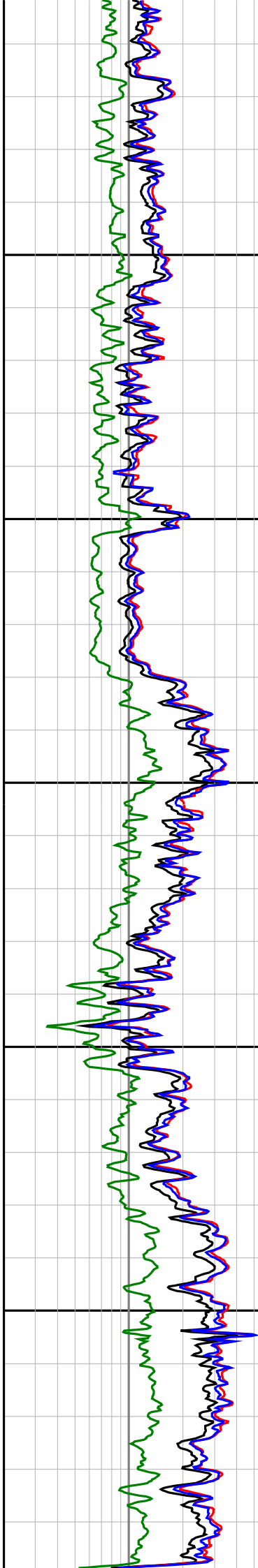
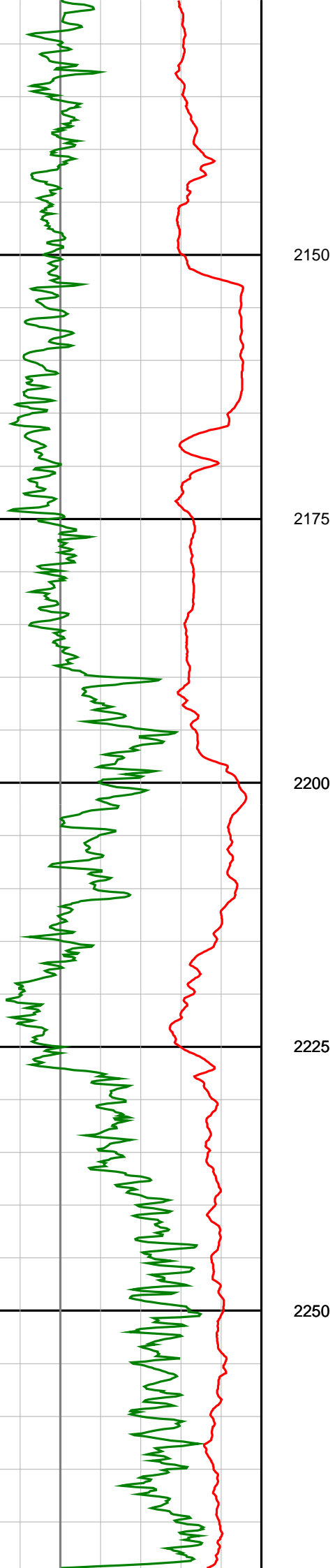
1800

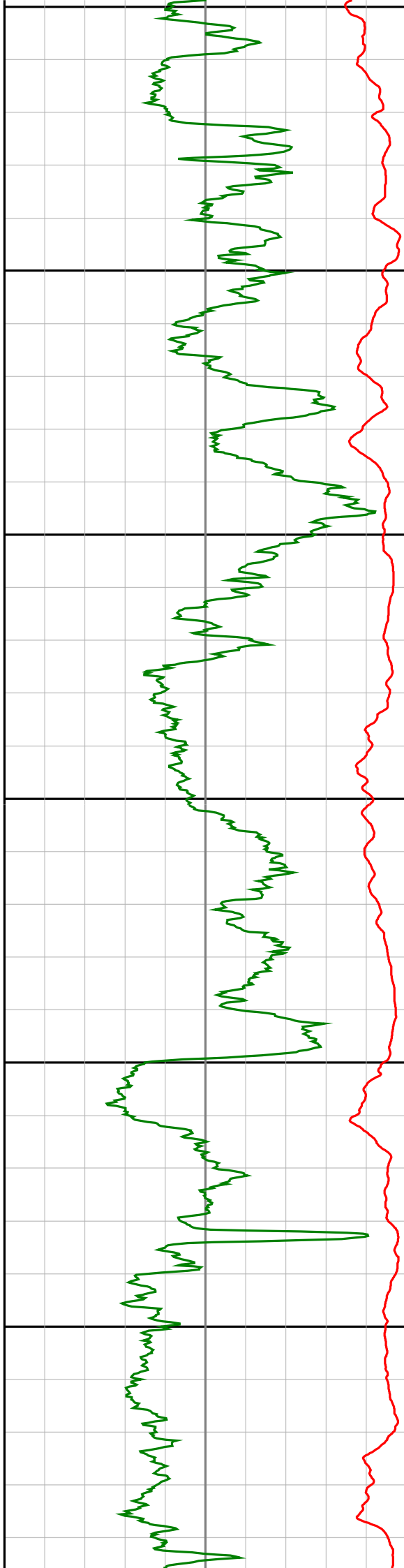
1825











2275

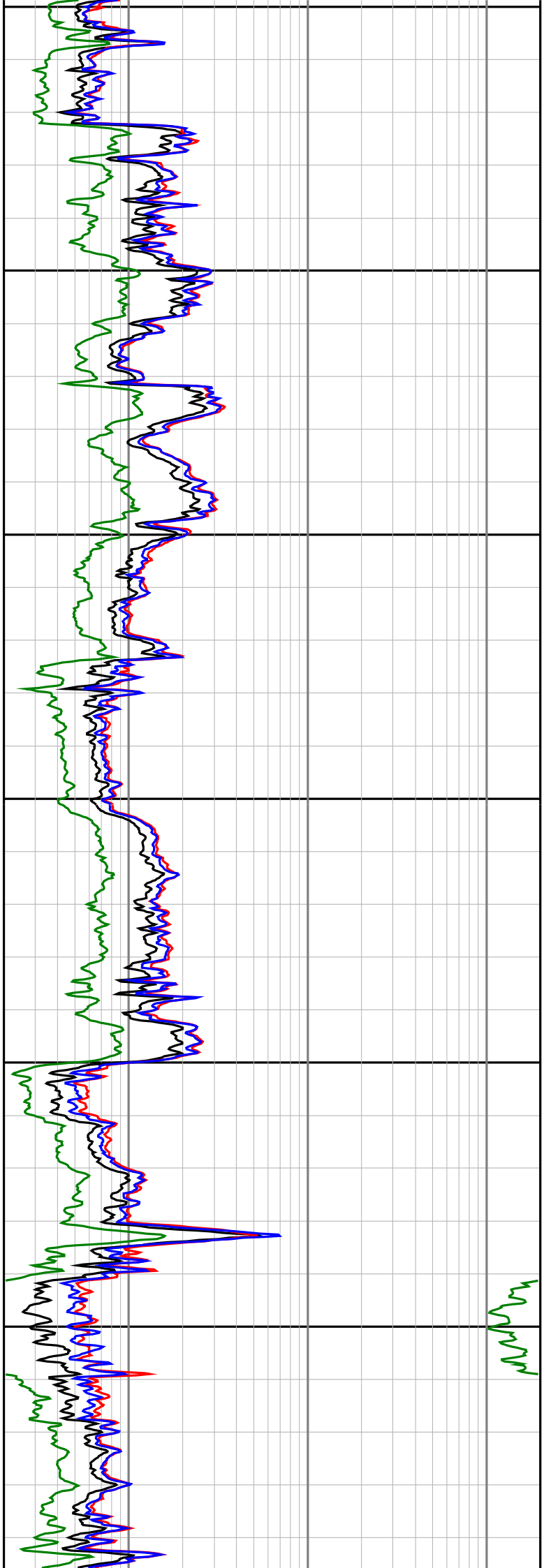
2300

2325

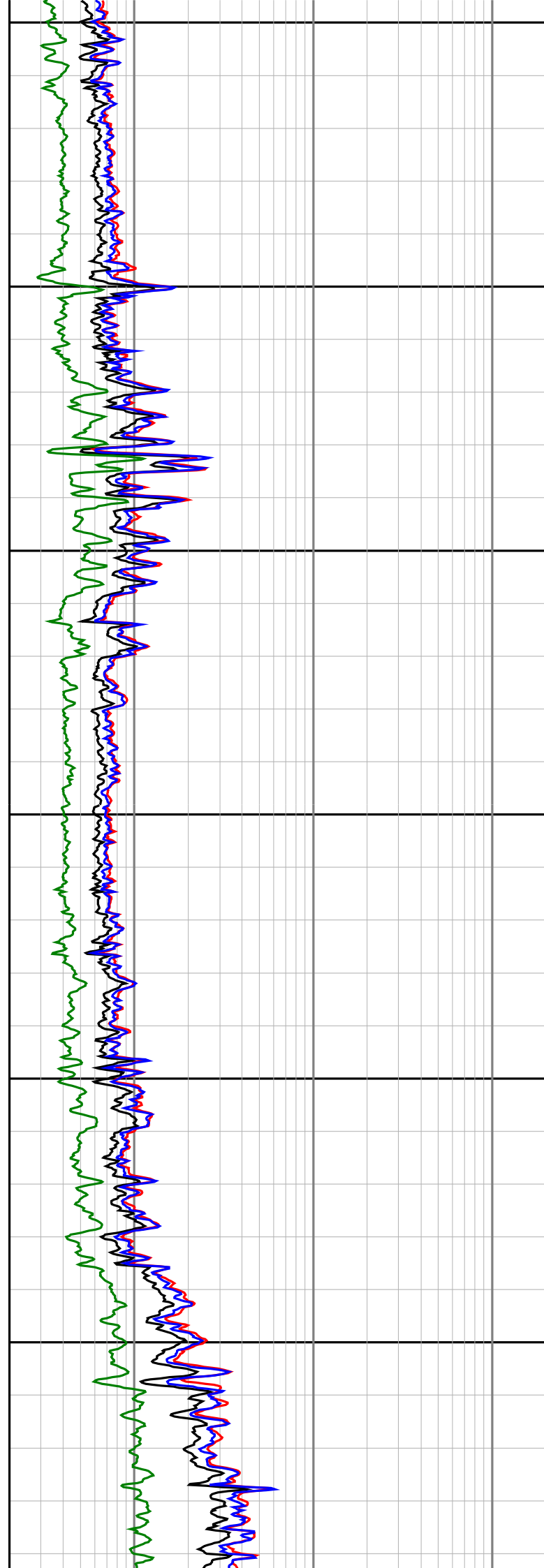
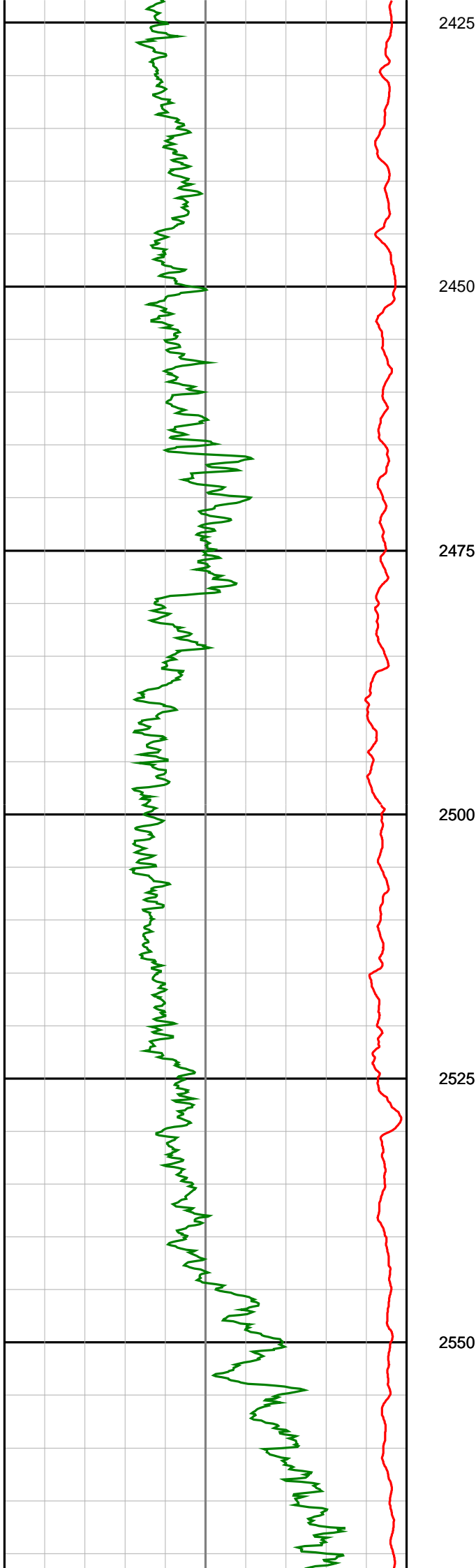
2350

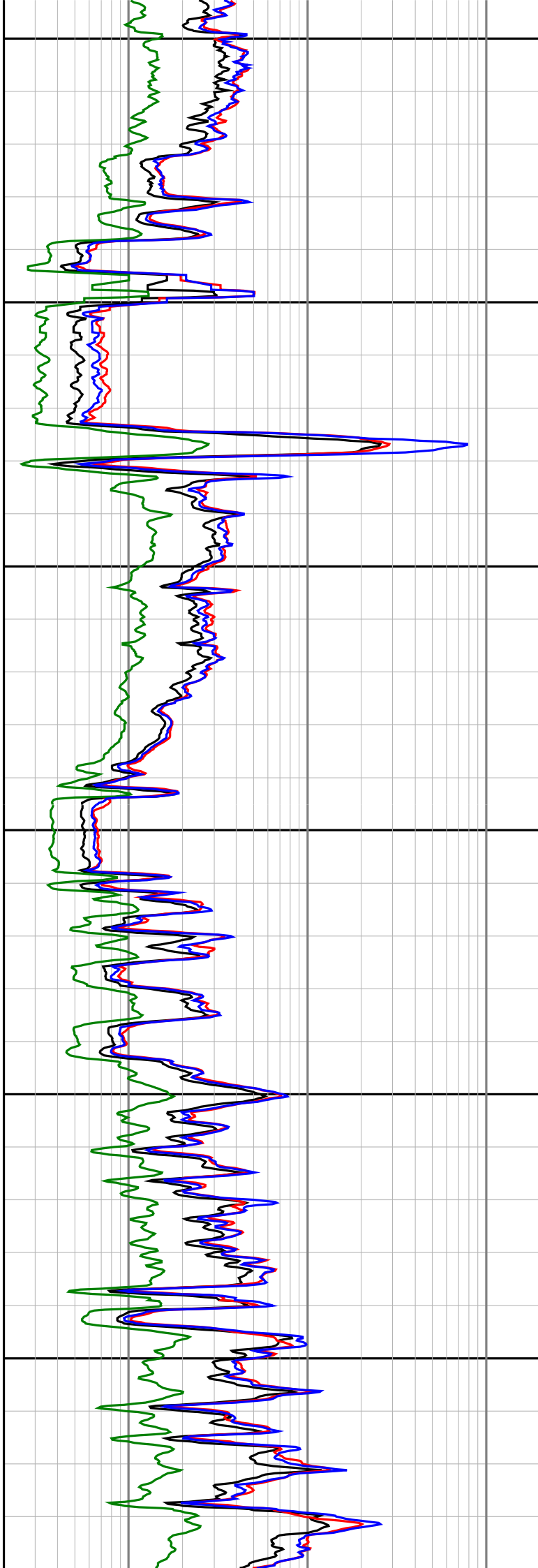
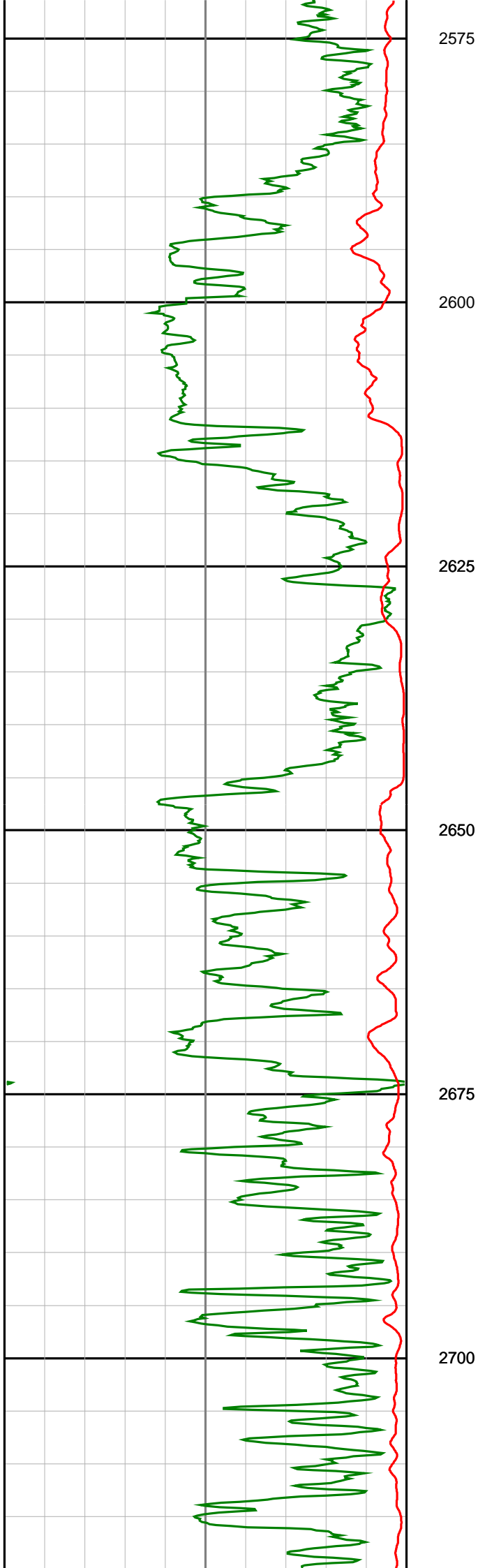
2375

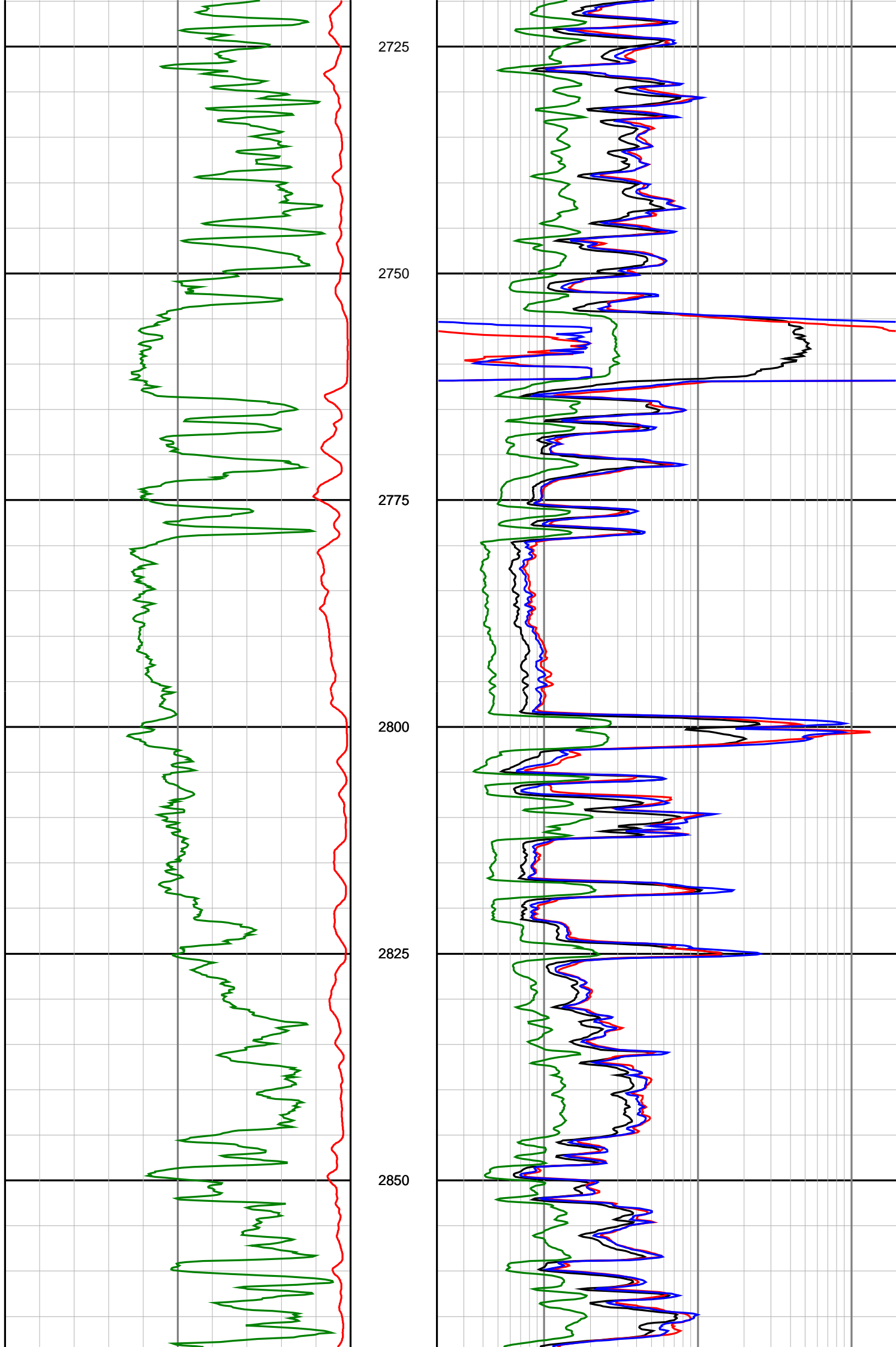
2400

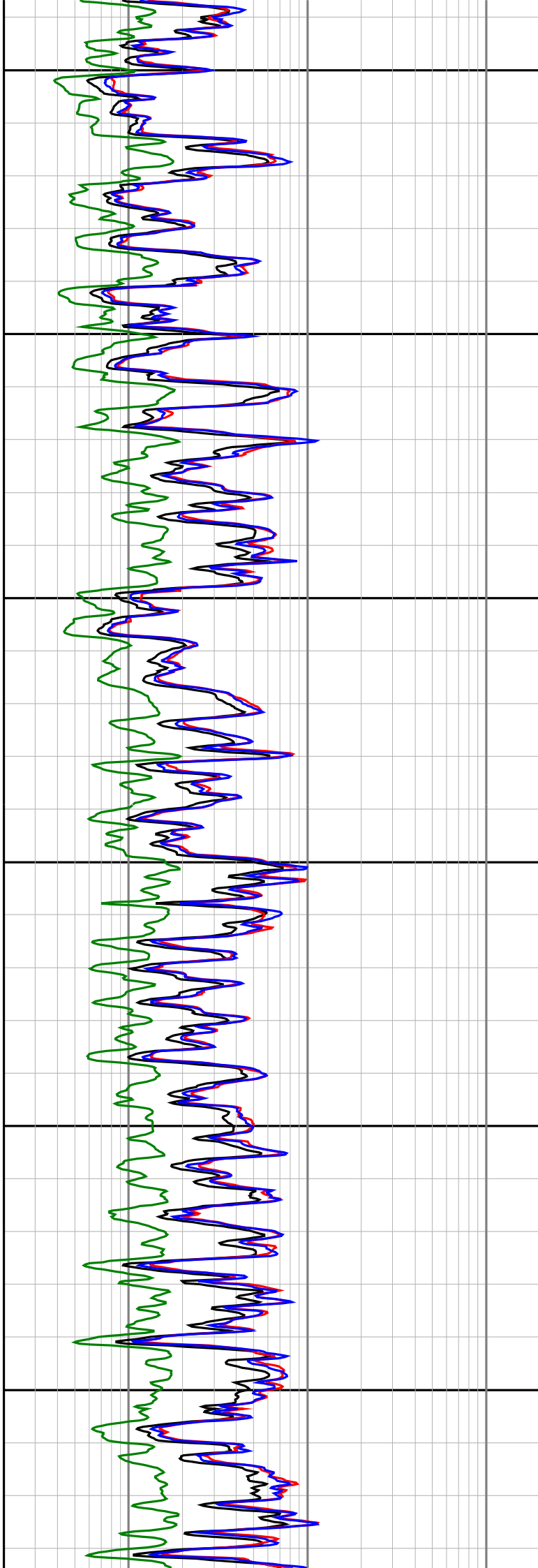
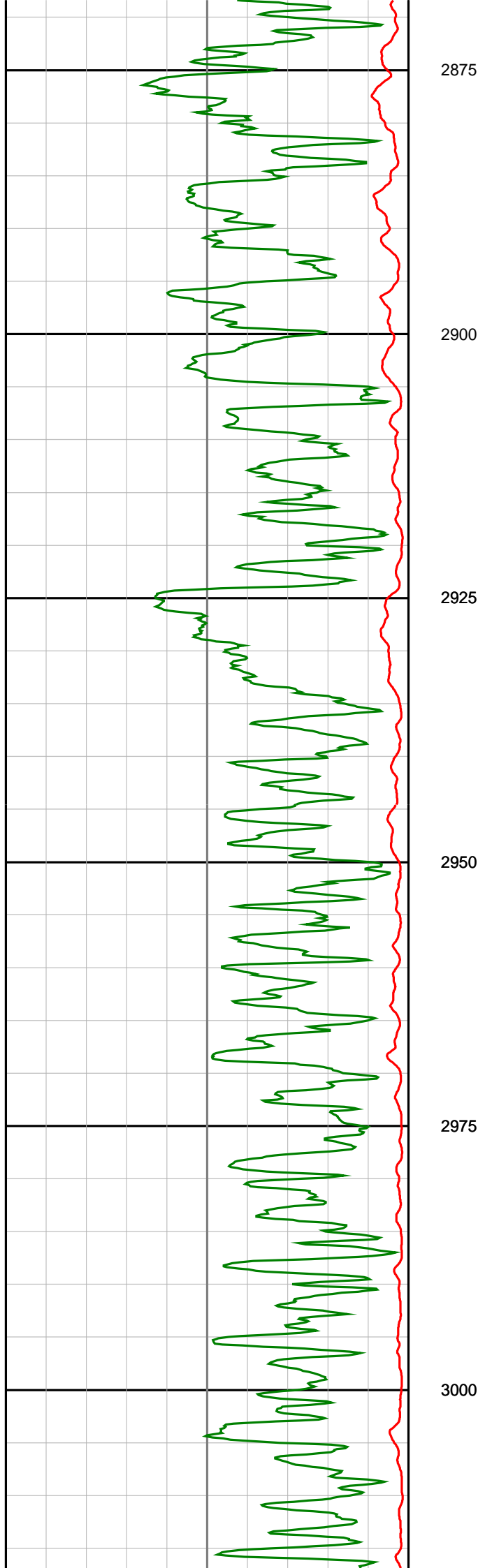


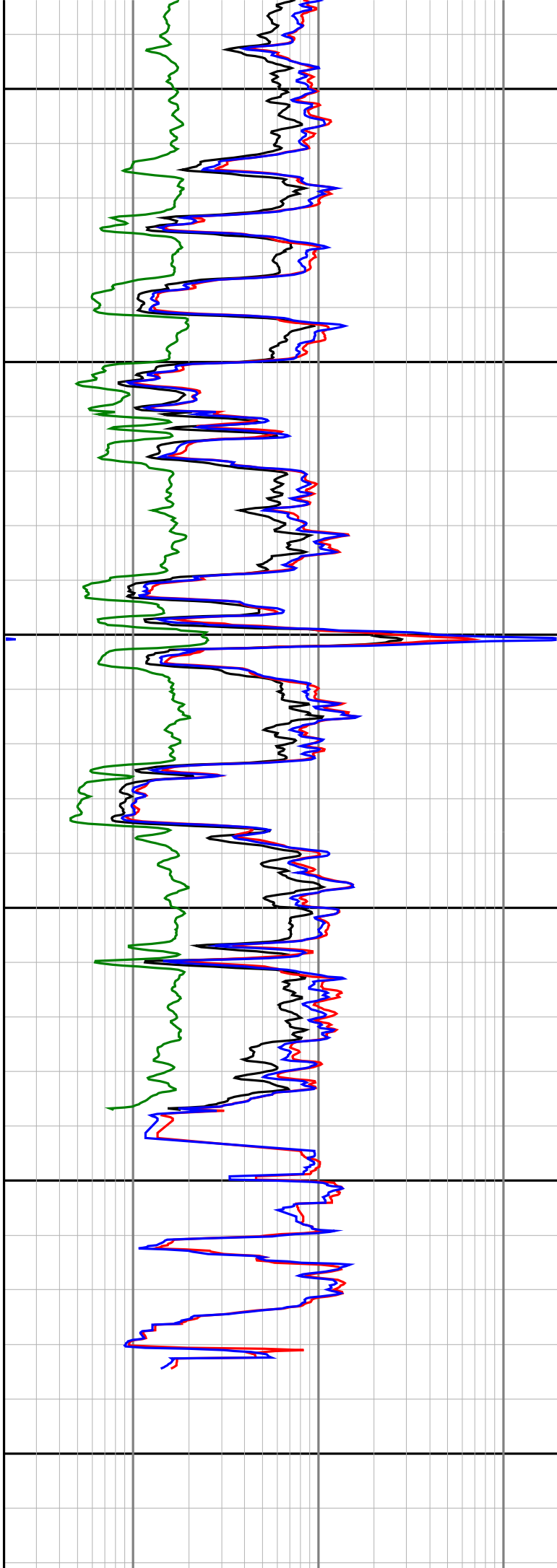
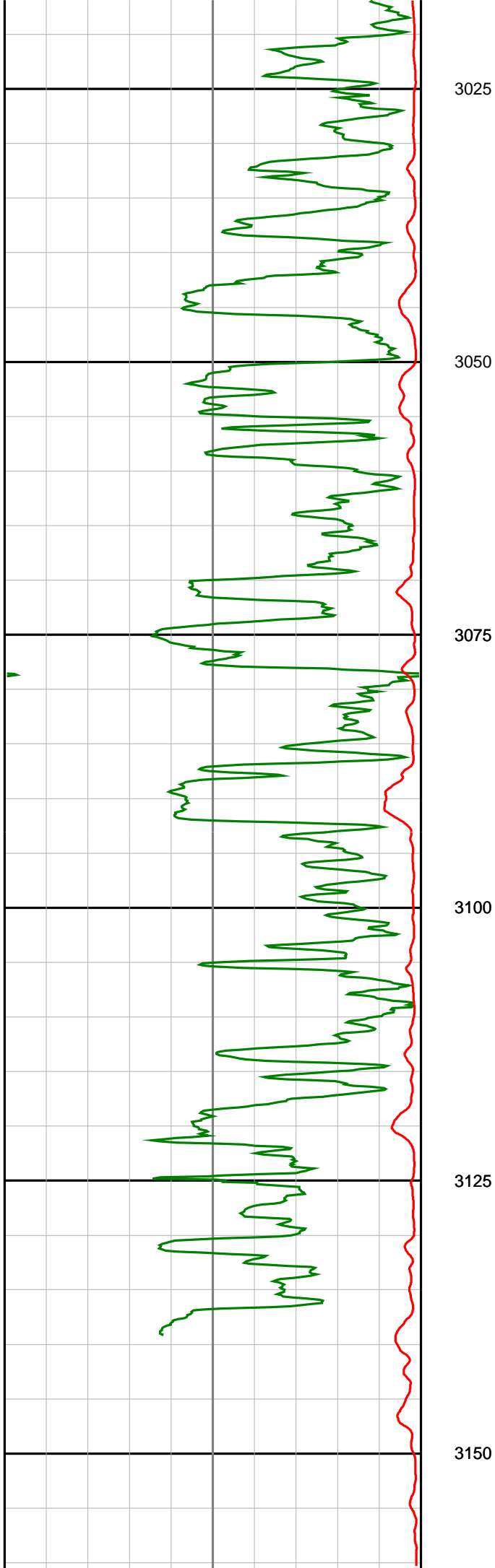
2400











<p style="text-align: center;">Gamma Ray (SGRC) api</p> <p>0 200</p>	<p style="text-align: center;">Depth MD 1:500</p>	<p style="text-align: center;">Ext Shallow Phase Res (SEXP) ohmm</p> <p>0.2 200</p>
<p style="text-align: center;">Rate Of Penetration (SROP) m/hr</p> <p>500 0</p>		<p style="text-align: center;">Shallow Phase Res (SESP) ohmm</p> <p>0.2 200</p>
		<p style="text-align: center;">Medium Phase Res (SEMP) ohmm</p> <p>0.2 200</p>
		<p style="text-align: center;">Deep Phase Res (SEDP) ohmm</p> <p>0.2 200</p>